

**PENNSYLVANIA WEEKLY INFLUENZA REPORT
INFORMATION FROM 02OCT22 THROUGH 23SEP23**

SEASON-TO-DATE INFLUENZA CASE COUNTS BY COUNTY AND INFLUENZA TYPE

	Influenza Type			TOTAL
	A	B	U	
County				
ADAMS	3050	244	.	3294
ALLEGHENY	15200	955	.	16155
ARMSTRONG	905	42	.	947
BEAVER	2029	14	1	2044
BEDFORD	488	14	2	504
BERKS	4966	495	18	5479
BLAIR	864	43	.	907
BRADFORD	1647	7	.	1654
BUCKS	5686	498	13	6197
BUTLER	2831	230	2	3063
CAMBRIA	2435	355	7	2797
CAMERON	63	4	.	67
CARBON	1345	14	.	1359
CENTRE	2402	46	41	2489
CHESTER	4220	307	2	4529
CLARION	455	19	.	474
CLEARFIELD	1642	13	.	1655
CLINTON	652	7	.	659
COLUMBIA	1354	13	.	1367
CRAWFORD	1836	21	.	1857
CUMBERLAND	3543	683	155	4381
DAUPHIN	4037	510	3	4550
DELAWARE	6105	380	1	6486
ELK	510	9	.	519
ERIE	4650	37	5	4692
FAYETTE	2486	53	1	2540
FOREST	30	1	.	31
FRANKLIN	3414	125	.	3539
FULTON	217	29	.	246
GREENE	370	14	.	384
HUNTINGDON	560	9	.	569
INDIANA	975	176	.	1151
JEFFERSON	782	52	1	835
JUNIATA	272	3	.	275
LACKAWANNA	3652	85	.	3737

(Continued)

**PENNSYLVANIA WEEKLY INFLUENZA REPORT
INFORMATION FROM 02OCT22 THROUGH 23SEP23**

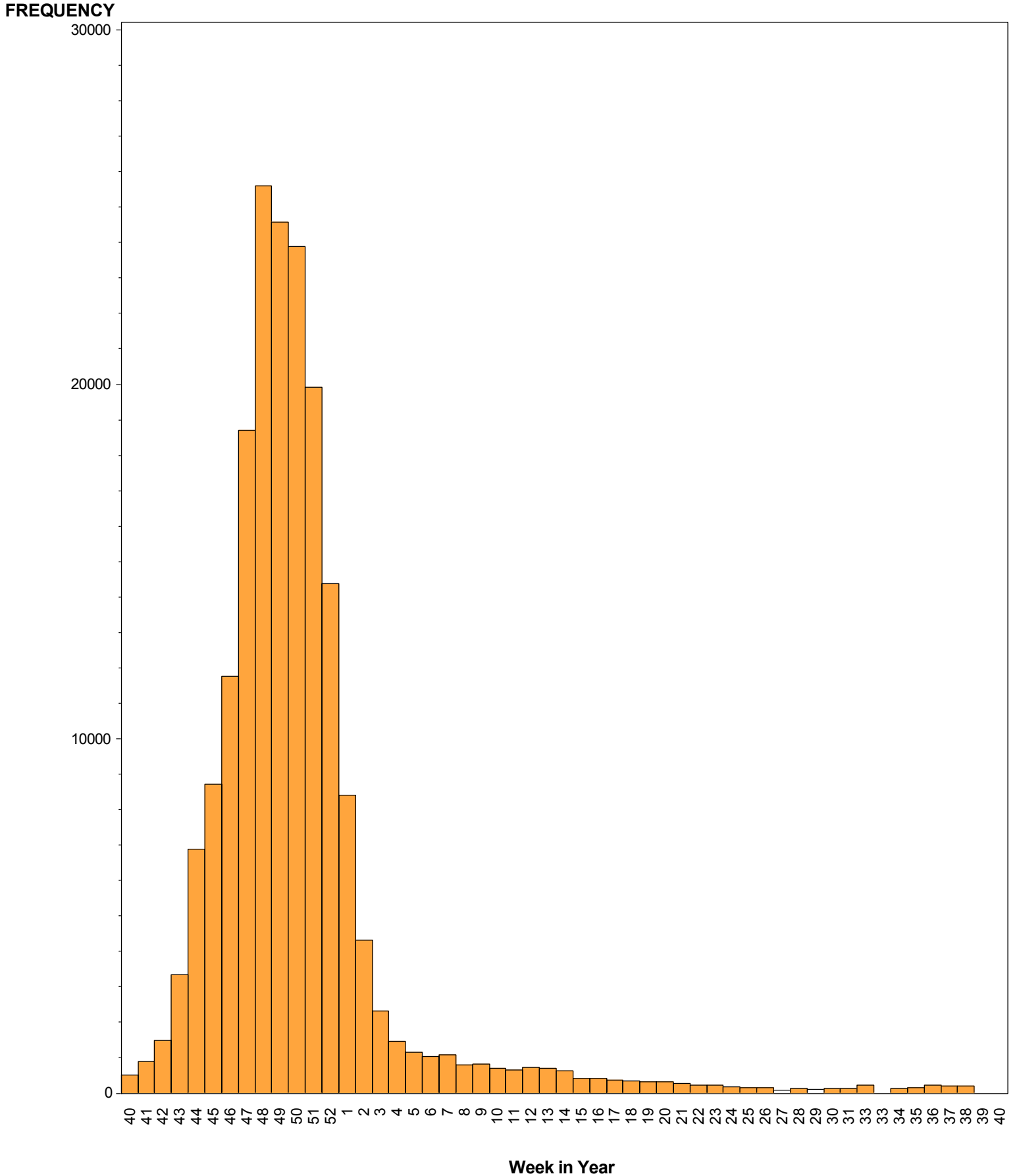
SEASON-TO-DATE INFLUENZA CASE COUNTS BY COUNTY AND INFLUENZA TYPE

	Influenza Type			TOTAL
	A	B	U	
County				
LANCASTER	9683	285	1	9969
LAWRENCE	950	39	.	989
LEBANON	2523	88	.	2611
LEHIGH	7293	340	.	7633
LUZERNE	6661	145	1	6807
LYCOMING	1229	18	.	1247
MCKEAN	489	2	.	491
MERCER	1290	33	.	1323
MIFFLIN	962	3	.	965
MONROE	3686	77	1	3764
MONTGOMERY	9037	964	64	10065
MONTOUR	470	2	.	472
NORTHAMPTON	6173	396	4	6573
NORTHUMBERLAND	1934	25	2	1961
PERRY	370	63	.	433
PHILADELPHIA	16105	648	2	16755
PIKE	541	17	.	558
POTTER	213	16	1	230
SCHUYLKILL	2374	26	.	2400
SNYDER	399	1	.	400
SOMERSET	595	88	.	683
SULLIVAN	77	.	.	77
SUSQUEHANNA	762	9	.	771
TIOGA	381	1	.	382
UNION	361	2	.	363
VENANGO	488	10	.	498
WARREN	705	2	.	707
WASHINGTON	1707	167	4	1878
WAYNE	1313	492	.	1805
WESTMORELAND	4371	404	.	4775
WYOMING	533	10	.	543
YORK	10252	790	1	11043
All	179600	10670	333	190603

PENNSYLVANIA WEEKLY INFLUENZA REPORT

INFORMATION FROM 02OCT22 THROUGH 23SEP23

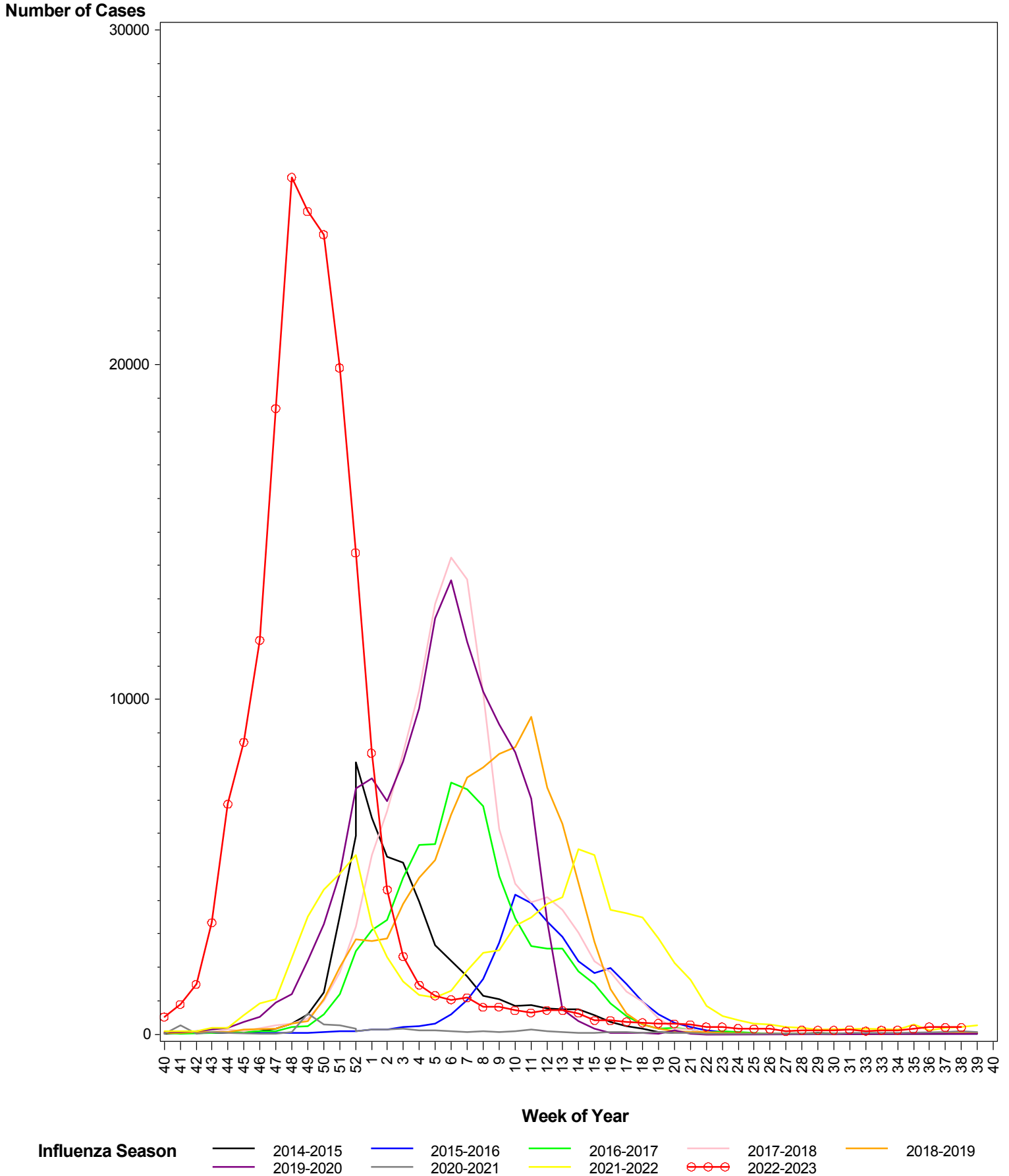
NUMBER OF PA INFLUENZA CASES (ANTIGEN, CULTURE, OR PCR POSITIVE), BY WEEK OF FIRST REPORT



PENNSYLVANIA WEEKLY INFLUENZA REPORT

INFORMATION FROM 02OCT22 THROUGH 23SEP23

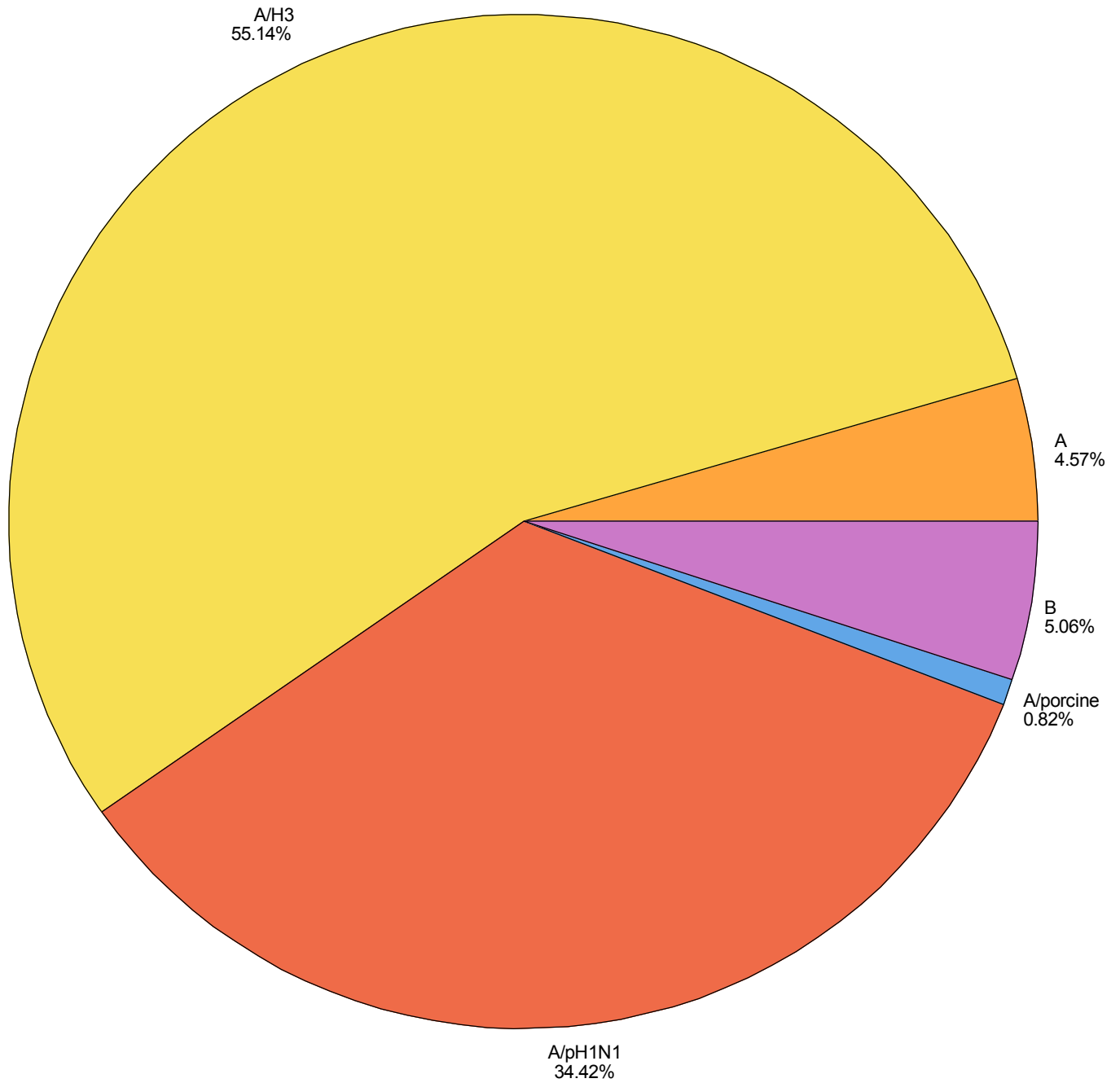
COMPARISON OF PA-NEDSS INFLUENZA CASES (ALL TYPES) IN CURRENT SEASON TO THE 8 PREVIOUS SEASONS



PENNSYLVANIA WEEKLY INFLUENZA REPORT

INFORMATION FROM 02OCT22 THROUGH 23SEP23

SEASON-TO-DATE INFLUENZA SUB-TYPING RESULTS FROM STATE PUBLIC HEALTH LAB



**PENNSYLVANIA WEEKLY INFLUENZA REPORT
INFORMATION FROM 02OCT22 THROUGH 23SEP23**

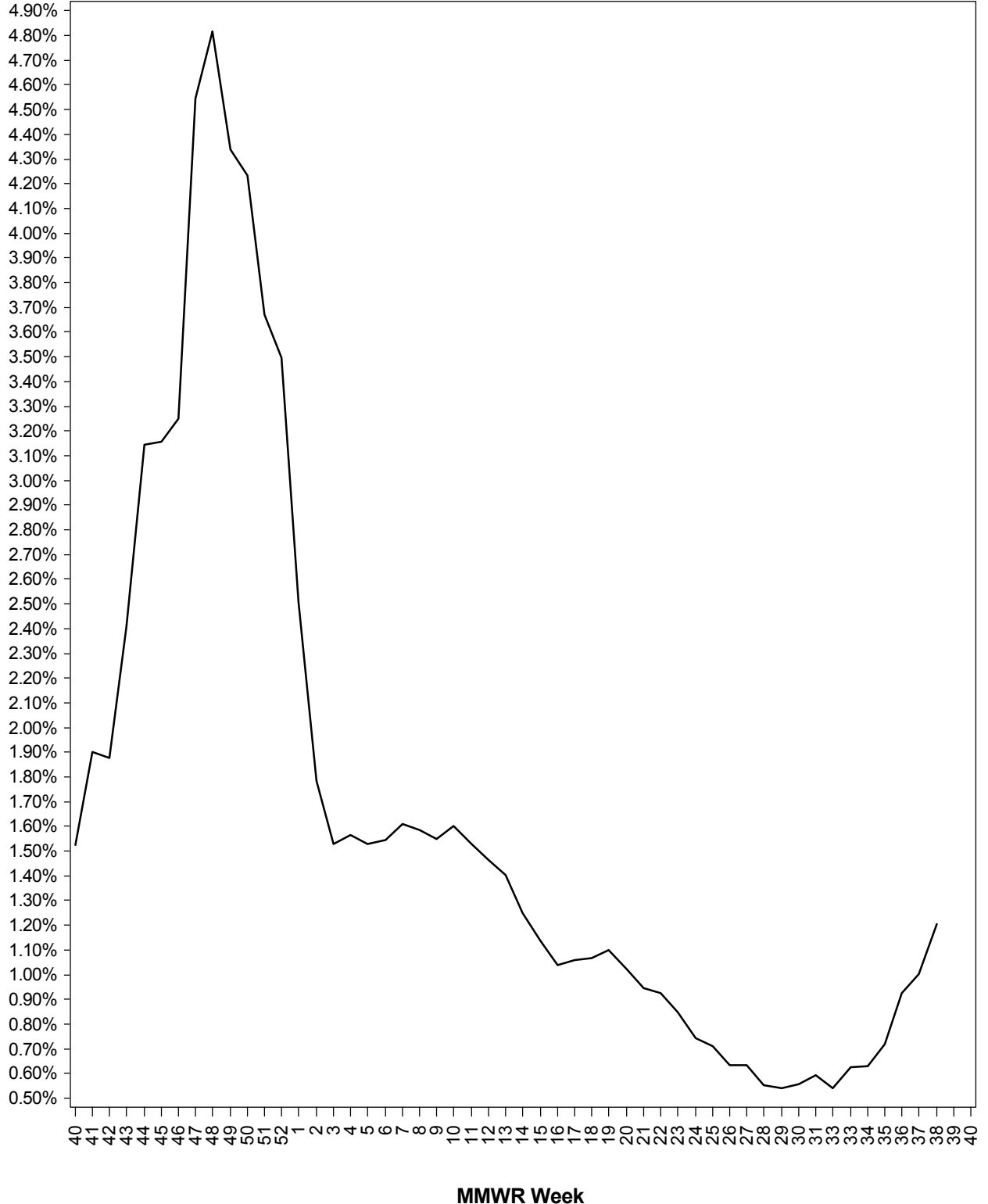
SEASON-TO-DATE INFLUENZA-ASSOCIATED DEATHS BY AGE

	Influenza-associated deaths
AGE	
0-4	1
05-9	1
10-18	1
25-49	9
50-64	27
65+	142
All	181

PENNSYLVANIA WEEKLY INFLUENZA REPORT INFORMATION FROM 02OCT22 THROUGH 23SEP23

PERCENT OF EMERGENCY DEPARTMENT VISITS WITH INFLUENZA-LIKE ILLNESS (ILI*) AS REASON FOR VISIT Statewide, By Week of Emergency Department Visit

Percent of ED Visits for ILI



Influenza Season — 2022-2023

*ILI defined as presence of fever and (cough or sore throat) syndromes, or specific reference to flu
 ED data obtained daily from 146 Emergency Departments across Pennsylvania

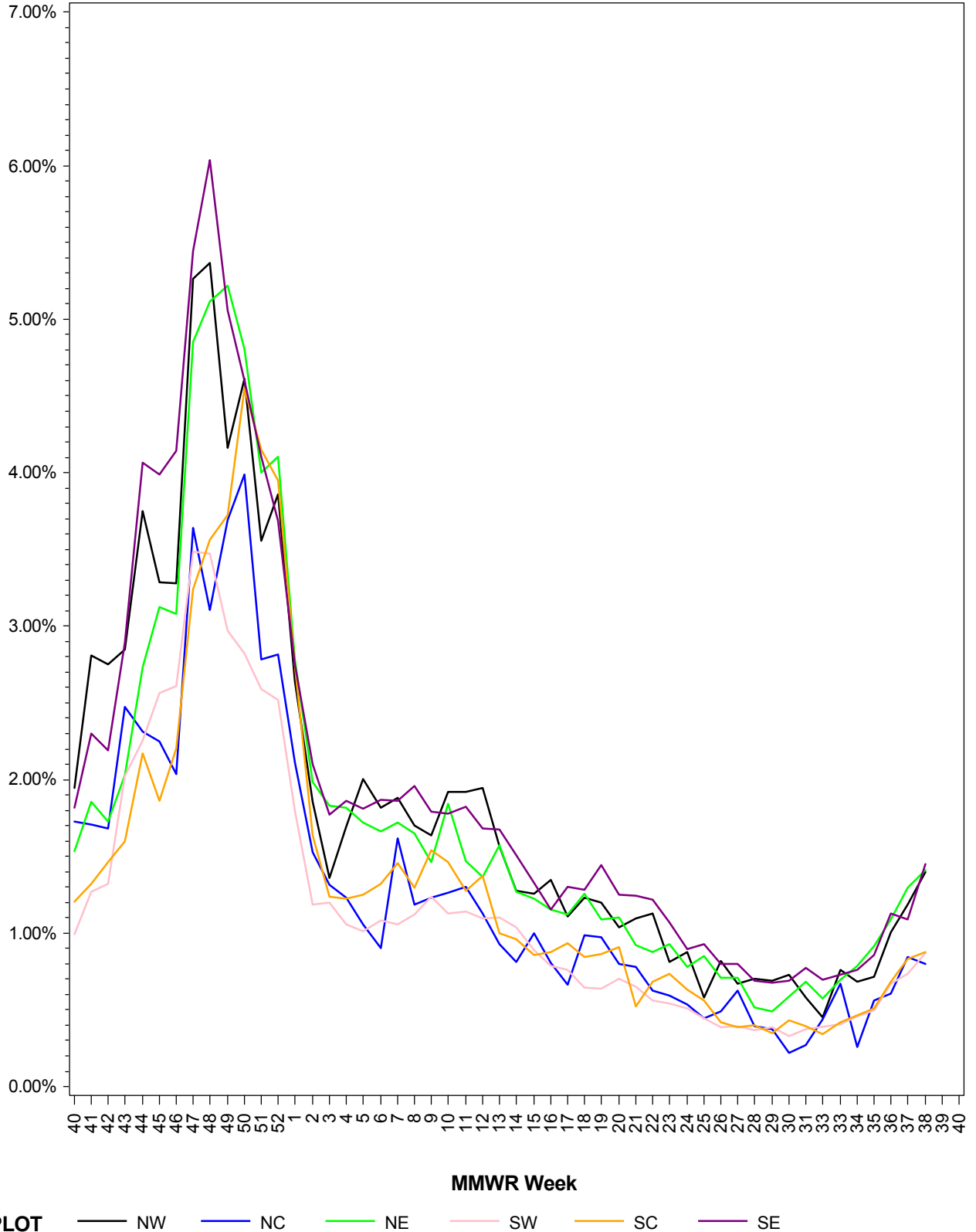
PENNSYLVANIA WEEKLY INFLUENZA REPORT

INFORMATION FROM 02OCT22 THROUGH 23SEP23

PERCENT OF EMERGENCY DEPARTMENT VISITS WITH INFLUENZA-LIKE ILLNESS (ILI*) AS REASON FOR VISIT

By Region and Week of Emergency Department Visit

Percent of ED Visits for ILI



*ILI defined as presence of fever and (cough or sore throat) syndromes, or specific reference to flu
 ED data obtained daily from 146 Emergency Departments across Pennsylvania

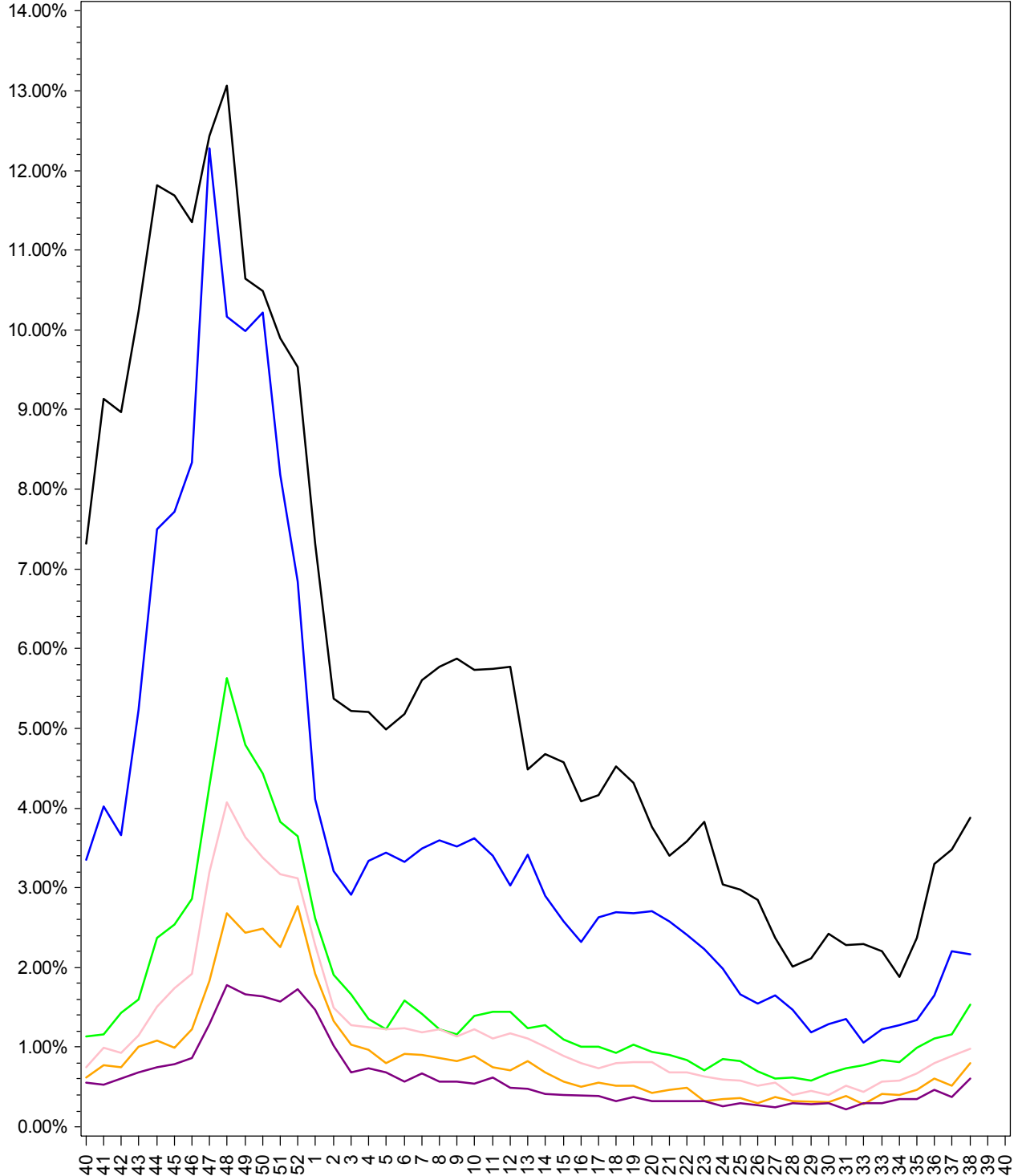
PENNSYLVANIA WEEKLY INFLUENZA REPORT

INFORMATION FROM 02OCT22 THROUGH 23SEP23

PERCENT OF EMERGENCY DEPARTMENT VISITS WITH INFLUENZA-LIKE ILLNESS (ILI*) AS REASON FOR VISIT

By Age Group and Week of Emergency Department Visit

Percent of ED Visits for ILI



MMWR Week

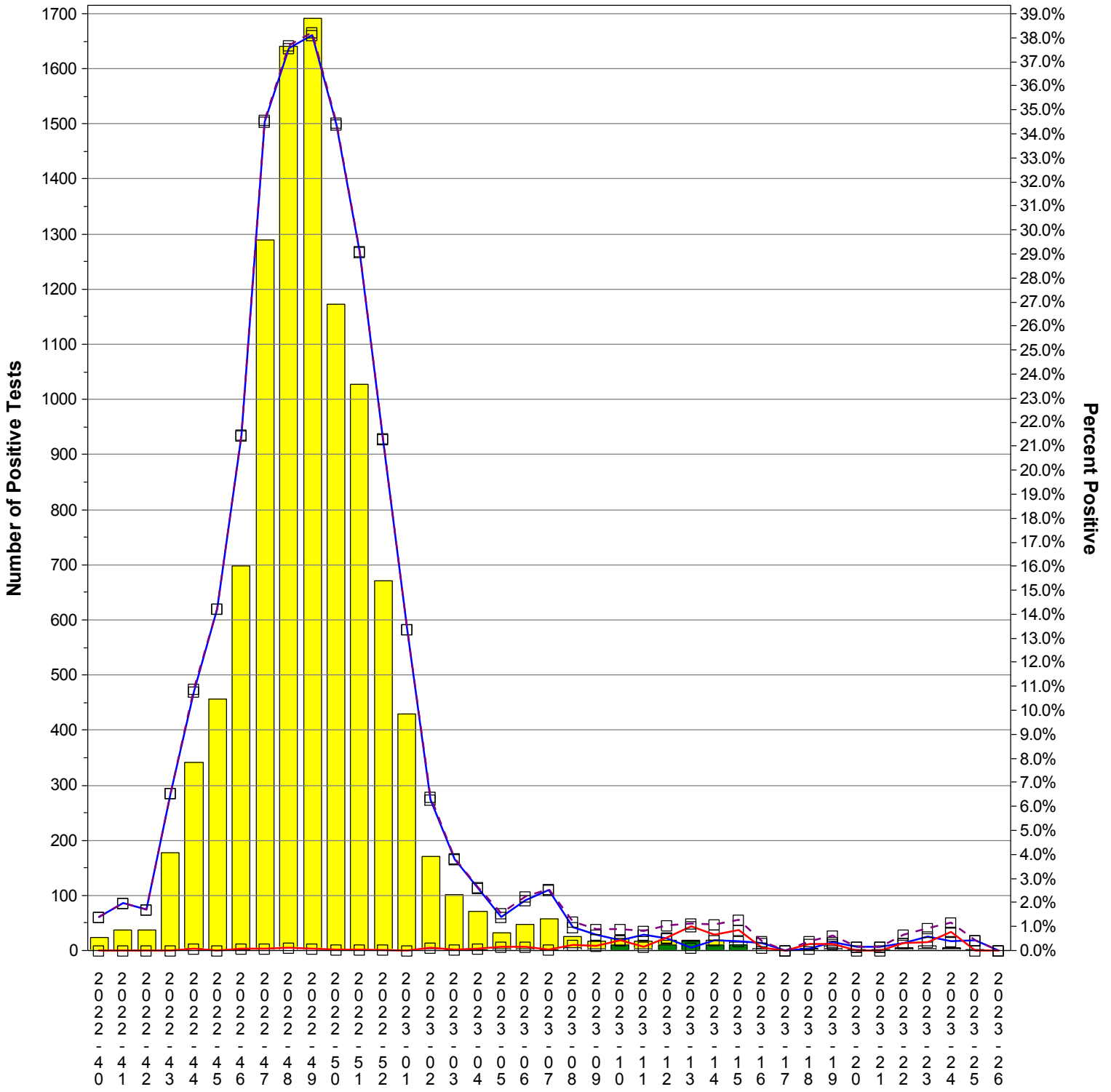
PLOT — 0-4 — 5-18 — 19-24 — 25-49 — 50-64 — 65+

*ILI defined as presence of fever and (cough or sore throat) syndromes, or specific reference to flu
 ED data obtained daily from 146 Emergency Departments across Pennsylvania

PENNSYLVANIA WEEKLY INFLUENZA REPORT

INFORMATION FROM 02OCT22 THROUGH 23SEP23

**Influenza Test Results Reported to the National Respiratory and Enteric Virus Surveillance System (NREVSS)
Select Pennsylvania Laboratories, Season to date**



Influenza Type ■ Influenza B ■ Influenza A

PLOT —□— % Positive for A —□— % Positive for B —□— % Positive for Flu

***ILI defined as presence of fever and (cough or sore throat) syndromes, or specific reference to flu ED data obtained daily from 146 Emergency Departments across Pennsylvania**

